



Troubleshooting

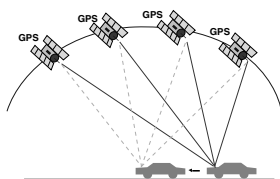
What is GPS?

The Global Positioning System (GPS) is a satellite-based navigation system made up of a network of 24 satellites placed into orbit by the U.S.

Department of Defence. GPS was originally intended for military applications, but in the 1980s, the government made the system available for civilian use.

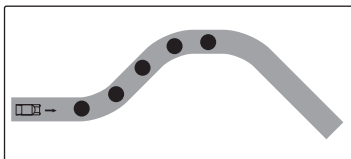
GPS works in any weather conditions, anywhere in the world, 24 hours a day.

There are no subscription fees or setup charges to use GPS.

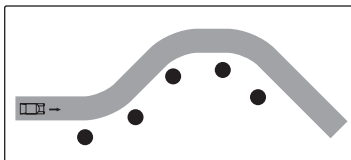


Map matching

The GPS used by this Mobile Navigation System is susceptible to certain errors. Their calculations may on occasion place you in a location on the map where no road exists. In this situation, the processing system understands that vehicles travel only on roads, and is able to correct your position by adjusting it to a near road. This is called map matching.



With map matching.



With no map matching.

Basic operation tips

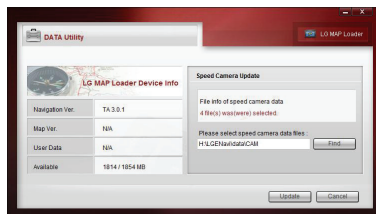
1. After charging or connecting to a power source, turn the unit on.
2. Make sure you are stopped (not moving) in a location with a clear view of the sky.
3. You will see your current location within a few minutes and then you can start navigating.
4. If the correct location is not found within 6 minutes, restart the unit using the ON/OFF button on the side of the unit.

About speed camera

Use of the speed camera may be illegal in some countries.

How to update the speed camera programme

1. To update camera database, visit the site www.poicon.com.
2. Download *.lgsf (charged) in PC.
3. Click "Speed Camera" button on the "DATA Utility" screen. (Page 40)
4. Search the *.lgsf by clicking "Find" button.



5. Click "Update" button.